



HYDE CONCRETE
8249 WATERFORD RD, UNIT A
PASADENA, MD 21122
Office: 410.349.0008
www.hydeconcrete.com

COLOR OPTIONS

1. SAIL CLOTH (WHITE)
2. CONCRETE GRAY

FUEL OPTION

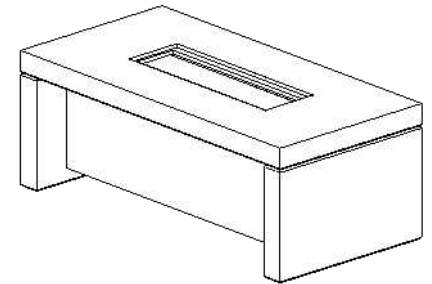
1. NATURAL GAS
2. LIQUID PROPANE (LP)

IGNITION OPTIONS

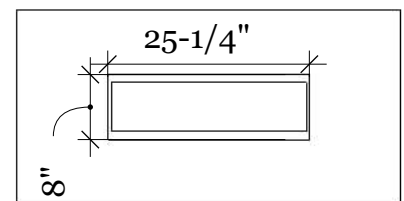
1. MATCH LIT
2. PUSH BUTTON

OTHER OPTIONS

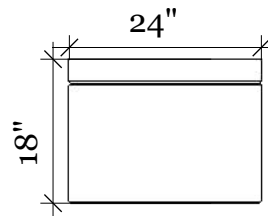
1. TEMPERED GLASS SCREEN
2. SMALL TANK LP KIT



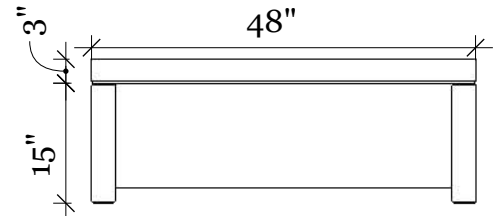
ISOMETRIC VIEW



TOP VIEW



SIDE VIEW



FRONT VIEW

SPECIFICATIONS

WEIGHT: ~330 LBS

MATERIAL

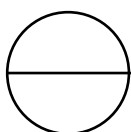
- GLASS FIBER REINFORCED CONCRETE

BUNER

- 50,000BTU 25X8 INTERLINK LINEAR BURNER FROM HPC

NOTES:

1. Installation to be completed in accordance with manufacturer's specifications.
2. Do not scale drawing.
3. This drawing is intended for use by architects, engineers, contractors, consultants and design professionals for planning purposes only. This drawing may not be used for construction.
4. All information contained herein was current at the time of development but must be reviewed and approved by the product manufacturer to be considered accurate.
5. Contractors note: For product and company information visit www.hydeconcrete.com



CASCADE

4X2 FIRE TABLE

REVISION DATE 04/02/2022