

The background is a light-colored, marbled surface with grey and white veining. In the center, there is a rectangular box with a metallic, brushed-silver gradient and a dark border. Inside this box, the word "NOVO" is written in a large, bold, black, sans-serif font.

**NOVO**

THE NEW AMERICAN BACKYARD

A man with reddish hair, wearing a red and white checkered shirt, is laughing heartily while serving food on a white plate. He is standing at an outdoor dining table. In the foreground, a woman with blonde hair is seated at the table, looking towards the man. The table is set with various items including a green bottle, glasses, and a bowl of fruit. The background shows a blurred outdoor setting with trees and a building under a warm, golden light.

## THE NEW AMERICAN BACKYARD

Family, togetherness, passion and comfort are all a part of the art and joy of casual living outdoors. NOVO crafts exceptional outdoor cooking and entertaining equipment to elevate your lifestyle. The New American Backyard is the theater to celebrate life's big moments and savor every day's small victories.

Built on decades of outdoor living industry experience & performance driven innovation we invite you to craft your own New American Backyard with NOVO.

**NOVO**  
THE NEW AMERICAN BACKYARD



## **COOKING**

NOVO Series Grills: 5

HONE Series Grills: 6

ALTA Series Grills: 7

NOVO Side Burners: 8

ALTA Side Burners: 9

Warming Drawer: 9

## **ENTERTAINING**

Refrigeration: 11-12

Sink & Bar: 13

Pantry & Storage: 14

Ventilation: 15

Accessories: 16

## **INFO**

Warranty: 18

Specifications: 19





A high-angle, close-up photograph of a group of people dining at a restaurant. The table is made of light-colored wood and is set with several white plates and bowls filled with food. In the foreground, there are plates of french fries, a bowl of fried chicken strips, and a plate with a tomato-based sauce and bread. In the background, there are plates of roasted potatoes, a bowl of fried fish, and a plate of breaded chicken. Several glasses of red wine are scattered across the table. People's hands are visible, some holding forks and knives, indicating they are in the middle of a meal. The overall atmosphere is casual and social.

**COOKING**

**NOVO**  
THE NEW AMERICAN BACKYARD



## NOVO SERIES GAS GRILLS



**NOVO42** 42" Gas Grill with Infrared Backburner



**NOVO36** 36" Gas Grill with Infrared Backburner



**NOVO30** 30" Gas Grill with Infrared Backburner with optional grill base

**NOVO** series grills are the culmination of decades of experience and innovation designing and building the very best outdoor cooking systems. Crafted from the highest quality stainless steel and featuring our most powerful burners and professional grade features, our luxurious NOVO grills are designed to be the centerpiece of your backyard.

### STANDARD FEATURES

- 26,000 BTU, 304 stainless steel burners for exceptional cooking performance
- 304 stainless steel construction to withstand harsh outdoor elements
- Professional style square cooking grates for restaurant style sear marks & maximum heat transfer
- Advanced ceramic briquette array to ensure even heat, maximum flavor & minimal flare-ups
- Heat zone separators for multi-zone cooking
- Double lined hood w/feather light spring assist to open and close with ease
- Dual position warming rack stows up and out of the way when not in use
- Rugged flame thrower ignition system for safe and reliable start-up, every time
- Illuminated interior and control panel so the fun doesn't stop when the sun goes down
- 15,000 BTU infrared backburner with integrated spit rod storage
- Professional grade thermometer
- Built-in grill cover included
- Designed, built and tested by our master craftsmen in Southern California
- Available in Natural Gas and Propane

### OPTIONS

- 26,000 BTU Drop-In Sear Burner
- Rotisserie Kit (40 lb. motor)
- Heavy-Duty Rotisserie Kit\* (100 lb. motor)

\*not available for 30" grills

- Grill Bases
- Smoker Tray
- Griddle Plate
- Red Brass Burners

### NOVO SERIES COOKING SYSTEM





## HONE SERIES GAS GRILLS

**HONE** series is our high-performance premium grill line. Crafted from the highest quality stainless steel & featuring our most powerful burners, HONE series grills are designed to elevate your backyard entertaining experience.



**HONEY42** 42" Gas Grill



**HONEY36** 36" Gas Grill



**HONEY30** 30" Gas Grill with optional grill base

### STANDARD FEATURES

- 26,000 BTU, 304 stainless steel burners for exceptional cooking performance
- 304 stainless steel construction to withstand harsh outdoor elements
- Heavy-duty 9mm stainless steel cooking grates for deep sear marks and efficient heat transfer
- 16 gauge 304 stainless steel burner covers to spread heat evenly & vaporize drippings
- Heat zone separators for multi-zone cooking
- Double lined hood for better heat retention
- Dual position warming rack stows up and out of the way when not in use
- Rugged flame thrower ignition system for safe and reliable start-up, every time
- Illuminated interior and control panel so the fun doesn't stop when the sun goes down
- Designed, built and tested by our master craftsmen in Southern California
- Available in Natural Gas and Propane

### OPTIONS

- 26,000 BTU Drop-In Sear Burner
- Heavy-Duty Vinyl Cover
- Rotisserie Kit (40 lb. capacity)
- Heavy-Duty Rotisserie Kit\* (100 lb. capacity)
- Grill Bases
- Smoker Tray
- Griddle Plate
- Feather Light Spring Assist Kit
- Advanced Ceramic Briquettes
- Pro-Style Square Cooking Grates
- Red Brass Burners

\*not available for 30" grills



## ALTA SERIES GAS GRILLS



**ALTA40** 40" Gas Grill with Infrared Backburner



**ALTA32** 32" Gas Grill with Infrared Backburner

**ALTA** series grills incorporate the best of what we've learned from building high quality outdoor cooking systems into a well designed and affordable grilling machine.

### STANDARD FEATURES

- 12,000 BTU stainless steel burners for exceptional cooking performance
- 443 grade stainless steel construction for years of worry free use
- 8mm stainless steel cooking grates for deep sear marks and efficient heat transfer
- 304 stainless steel burner covers to spread heat evenly & minimize flare-ups
- Heat zone separators for multi-zone cooking
- Double lined hood for better heat retention
- Rugged flame thrower ignition system for safe and reliable start-up, every time
- Illuminated interior and control panel so the fun doesn't stop when the sun goes down
- 15,000 BTU infrared backburner
- Available in Natural Gas and Propane

### OPTIONS

- 15,000 BTU Drop-In Sear Burner
- Heavy-Duty Vinyl Cover
- Grill Bases
- Rotisserie Kit (25 lb. capacity)
- Smoker Tray
- Griddle Plate
- Ceramic Briquettes



**ALTA32** 32" Gas Grill with Infrared Backburner on optional grill base



## NOVO POWER BURNER



**NOVOPB** Power Burner

### STANDARD FEATURES

Designed to complement **NOVO** & **HONE** series grills. A large surface area and high BTU's enable wok & stir-fry cooking, seafood boils, al-dente pasta, perfect paella, deep fried creations and more.

- 304 stainless steel construction to withstand harsh outdoor elements
- High Power 65,000 BTU stainless steel burner
- Large capacity 20" x 20" stainless steel grate cooking surface
- Removable center insert to allow for round bottom woks
- Illuminated control panel so the fun doesn't stop when the sun goes down
- Protective stainless steel lid included
- Designed, built and tested by our master craftsmen in Southern California
- Available in Natural Gas and Propane

## NOVO DOUBLE SIDE BURNER



**NOVDBLSB** Double Side Burner

### STANDARD FEATURES

Designed to complement **NOVO** & **HONE** series grills, our side burners give you the power and flexibility to confidently prepare side dishes and sauces with ease.

- 304 stainless steel construction to withstand harsh outdoor elements
- Dual independently controlled 17,500 BTU brass burners
- Large capacity 21-1/4" x 11-1/2" stainless steel grate cooking surface
- Illuminated control panel so the fun doesn't stop when the sun goes down
- Protective stainless steel lid included
- Available in Natural Gas and Propane



## ALTA POWER BURNER



**ALTAPB** Power Burner

### STANDARD FEATURES

Designed to complement **ALTA** series grills. Our ALTA Power Burner offers high BTU's for wok & stir-fry cooking, seafood boils, al-dente pasta, perfect paella, deep fried creations and more.

- 443 stainless steel construction to withstand harsh outdoor elements
- Powerful 60,000 BTU stainless steel burner
- Generous 16-1/2" x 13" stainless steel cooking surface
- Removable center insert to allow for round bottom woks
- Illuminated control panel so the fun doesn't stop when the sun goes down
- Protective stainless steel lid included
- Available in Natural Gas and Propane

## ALTA DOUBLE SIDE BURNER



**ALTADBSB** Double Side Burner

### STANDARD FEATURES

Designed to complement **ALTA** series grills. Our ALTA double side burner gives you the power and flexibility to confidently prepare sides and sauces with ease.

- 443 stainless steel construction to withstand harsh outdoor elements
- Dual independently controlled 17,500 BTU brass burners
- Generous 19-1/2" x 10-1/2" stainless steel grate cooking surface
- Illuminated control panel so the fun doesn't stop when the sun goes down
- Protective stainless steel lid included
- Available in Natural Gas and Propane

## WARMING DRAWER



**NOVO36WD** 36" Warming Drawer

### STANDARD FEATURES

Designed to complement **NOVO**, **HONE** & **ALTA** series grills our 36" warming drawer allows you to prep and entertain with ease and style. Bring maximum efficiency and functionality to your outdoor kitchen.

- 304 stainless steel construction to withstand harsh outdoor elements
- Smooth glide heavy duty tracks
- Full extension drawer slides
- Variable temperature control up to 220° F

A group of four people are seated around a wooden table in an outdoor dining setting. The man in the center, wearing a blue shirt, is smiling broadly while holding a glass of red wine. To his right, a woman with dark hair is also holding a wine glass and looking towards him. In the foreground, another woman is seen from the side, looking towards the man. The table is set with plates of food, including breadsticks, croissants, and a small potted plant. The background features lush greenery and a building with large windows.

**ENTERTAINING**

**NOVO**  
THE NEW AMERICAN BACKYARD



## OUTDOOR REFRIGERATION

Bring the convenience of cold storage and timeless design to your outdoor kitchen. Designed to complement **NOVO, HONE & ALTA** series grills. Featuring premium 304 stainless steel construction for rugged reliability and classic style.



**NOVO24DLXREF**

**24" DELUXE OUTDOOR REFRIGERATOR**

- 5.3 Cubic Feet
- Temperature Ranges: 32°F - 50°F
- 304 Stainless Steel Construction
- Built-In Design, Auto-Defrost
- UL Certified for Outdoor Use
- Digital Display
- Adjustable Digital Thermostat
- Factory Installed Security Lock
- Front Venting
- Right Hinge (*non-reversible*)
- Optional trim kit



**NOVO242DREF**

**24" DELUXE OUTDOOR 2-DRAWER REFRIGERATOR**

- 5.3 Cubic Feet
- Temperature Ranges 32°F - 50°F
- 304 Stainless Steel Construction
- Built-In Design, Auto-Frost
- UL Certified for Outdoor Use
- Adjustable Digital Thermostat
- Front Venting
- Drawer Slide Type
- Two Soft-Close Drawers
- Optional trim kit



**NOVO15GLASSREF**

**15" OUTDOOR REFRIGERATOR WITH GLASS DOOR**

- 3.2 Cubic Feet
- Temperature Ranges 32°F - 50°F
- 304 Stainless Steel Construction
- UL Outdoor Rated
- Front Venting
- Auto-Defrost
- Electronic Temperature Controller
- Digital Display
- Right Hinge (*non-reversible*)
- Optional trim kit



**NOVO15IM**

**15" DELUXE OUTDOOR ICE MACHINE**

- 304 Stainless Steel Construction
- UL Outdoor Rated
- Front Venting
- Auto-Defrost
- Electronic Temperature Controller
- Digital Display
- Daily Ice Output: 50 lbs.
- Storage Capacity: 25 lbs.
- Gravity drain
- Left Hinge (*reversible*)
- Optional trim kit

## OUTDOOR KEGERATORS & WINE STORAGE

Elevate your entertaining options in style and elegance with our stainless steel outdoor-rated kegerators and wine coolers. Featuring premium 304 stainless steel construction for rugged reliability and classic style. Designed to complement **NOVO**, **HONE** & **ALTA** series grills.



### NOVODBLKEG

#### 24" DELUXE OUTDOOR KEGERATOR DOUBLE TOWER

- 6.6 Cubic Feet
- Temperature Ranges 32°F - 50°F
- 304 Stainless Steel Construction
- Built-in design
- Auto-Defrost
- UL Certified for Outdoor Use
- Adjustable Digital Thermostat
- Factory Installed Security Lock
- Front Venting
- Right Hinge (*non-reversible*)
- Optional trim kit



### NOVOSNGKEG

#### 24" DELUXE OUTDOOR KEGERATOR SINGLE TOWER

- 6.6 Cubic Feet
- Temperature Ranges 32°F - 50°F
- 304 Stainless Steel Construction
- Built-in design
- Auto-Defrost
- UL Certified for Outdoor Use
- Adjustable Digital Thermostat
- Factory Installed Security Lock
- Front Venting
- Right Hinge (*non-reversible*)
- Optional trim kit



### NOVO15WINE1

#### 15" OUTDOOR WINE COOLER WITH GLASS DOOR

- 3.2 Cubic Feet
- Temperature Ranges 41° - 64°
- 304 Stainless Steel Construction
- Auto-Defrost
- Anti-Vibration System
- Built-in design
- Digital controller with temperature controller with digital display
- UL Certified for Outdoor Use
- Front Venting
- Factory Installed Security Lock
- Right Hinge (*non-reversible*)
- Optional trim kit

## OUTDOOR SINK & BAR ACCESSORIES

Outfit your outdoor space with the all amenities needed to entertain in style. Our full range of accessories allow you to bring the party outdoors with stainless steel sinks and built-in cooler options. Designed to complement **NOVO**, **HONE** & **ALTA** series grills.



### NOVO30BEV

- 30" Lighted Beverage & Prep Station
- LED Front Panel Lighting
- 304 Stainless Steel Construction
- Sink & Faucet Combo
- 40 lb. Ice Compartment
- Built-in Bottle Opener



### NOVO19SINK

19" x 15" Undermount Sink with Hot/Cold Faucet



### NOVO15SINK

15" Drop-In Sink with Hot/Cold Faucet



### NOVO28COOLER

28" 2.7 cu. ft. Drop-In Cooler

### NOVO17COOLER

17" 1.7 cu. ft. Drop-in Cooler



## PANTRY & STORAGE

A place for everything and everything in its place. NOVO offers a wide range of premium 304 stainless steel constructed heavy-duty storage options to keep your outdoor space well stocked and organized. Designed to complement **NOVO, HONE & ALTA** series grills. Drawers feature our premium soft-closing slide rails.

### DRY PANTRY STORAGE



#### NOVO362DSC

36" 2-Drawer Dry Storage Pantry & Enclosed Cabinet Combo

### DOOR/DRAWER COMBOS



#### NOVO362DADC

36" 2-Drawer & Access Door Combo

Available in:  
30", 33", 36", 42"

### SINGLE ACCESS DOORS



#### NOVO18SVAD

18" Access Door

Available in:  
18", 20", 27"

### DOUBLE ACCESS DOORS



#### NOVO36DBLAD

36" Double Access Doors

Available in:  
30", 33", 36", 42"

### VERTICAL DRAWERS



#### NOVO17TSD

17" Triple Drawer



#### NOVO17DBLSD

17" Double Drawer

### PAPER TOWEL COMBO



#### NOVO172DPTHC

17" Vertical 2-Drawer & Paper Towel Holder Combo

### UTENSIL DRAWER



#### NOVO26UD

26" Utensil Drawer

### TRASH & RECYCLING



#### NOVO20DBLTD

20" Double Bin Trash & Recycling

Available in:  
20" Single or Double Trash Bins

# VENTILATION

Protect your grill, surroundings and guests from excessive heat, grease and smoke with one of our premium vent hoods. Designed and built in Southern California to complement **NOVO**, **HONE** & **ALTA** series grills.

## VENT HOODS



**NOVO60VH**  
**NOVO48VH**  
**NOVO36VH**

### Outdoor Vent Hoods

- 304 stainless steel double wall construction
- 1,200 CFM
- Interior halogen task lighting
- 1/2" mounting bracket included

### Available in:

- 60" (60" Wide x 18" High x 30" Deep)
- 48" (48" Wide x 18" High x 30" Deep)
- 36" (36" Wide x 18" High x 30" Deep)



## 4" SPACER BRACKETS



**NOVO60VHSB4** 4" Spacer Brackets  
**NOVO48VHSB4**  
**NOVO36VHSB4**

*Available for 60", 48", 36" vent hoods*

## 8" SPACER BRACKETS



**NOVO60VHSB8** 8" Spacer Brackets  
**NOVO48VHSB8**  
**NOVO36VHSB8**

*Available for 60", 48", 36" vent hoods*

## ACCESSORIES



### ROTISSERIE KITS

NOVORK: Rotisserie kits with storage case for 30", 36", 42" NOVO/HONE grills, 40 lb. capacity

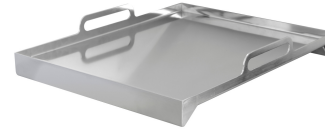
NOVOHDRK: Heavy-Duty Rotisserie kits with storage case for 36" & 42" NOVO/HONE grills, 100 lb. capacity

ALTARK: Rotisserie kit with storage case for 32" & 40" ALTA grills, 25 lb. capacity



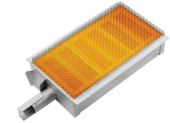
### SMOKER TRAYS

NOVOST: for NOVO/HONE grills  
ALTAST: for ALTA grills



### GRIDDLE PLATE

NOVO18GP: 14" x 18" Stainless Steel Griddle Plate. Fits all grill models.



### DROP-IN SEAR BURNERS

NOVOIRB: for NOVO/HONE grills  
ALTAIRB: for ALTA grills



### INSULATING LINERS FOR COMBUSTIBLE INSTALLATIONS


Available for all grill & side burner models



### HEAVY-DUTY VINYL COVERS

Available for all grills, power burners & side burners





NOVO is family owned and located in the Berkshire Mountains of New England. We utilize state-of-the-art manufacturing facilities in Southern California to craft our NOVO and HONE series grills. Drawing on decades of experience in the outdoor living industry we understand that details matter and at NOVO we take great pride in helping families craft their own New American Backyard.

Thank you for inviting NOVO into your home.



## WARRANTY

NOVO products include our LIMITED LIFETIME WARRANTY with all replacement parts 100% non-prorated.

NOVO Limited Warranty is valid for original purchaser at original site of delivery with proof of purchase and photo documentation only. Warranty is void upon transfer of ownership. Warranty does not apply to products installed in any commercial, rental, or non-residential application. Warranty covers replacement parts only. Manufacturer is not responsible for labor or labor-related costs. Warranty does not cover discoloration, surface rust, corrosion, or oxidation, which may occur due to harsh environments, chemicals, or overheating. Warranty will not apply for damage resulting from improper installations, abuse, extreme environments, grease fires, or misuse. Proof of regular and proper maintenance is required. Coastal, humid, and/or salt environments are subject to manufacturer review. All out-of-box claims must be made within 30 days of purchase and must be made prior to installation. Any product installed damaged will be considered damaged during installation and not covered under warranty. This warranty gives you specific legal rights, and you may also have other rights which vary from state to state.

TO OBTAIN WARRANTY PROTECTION UNDER THE NOVO LIMITED WARRANTY, YOU MUST SUBMIT A COMPLETED REGISTRATION FORM ONLINE AT [WWW.NOVOGRILLS.COM](http://WWW.NOVOGRILLS.COM) WITHIN 30 DAYS OF THE PURCHASE DATE. FAILURE TO SUBMIT THE REGISTRATION FORM WILL VOID THE LIMITED WARRANTY PROTECTION.

Please be advised - all display models are sold "as is" and the warranty covers the following items only: main burners (Limited Lifetime Warranty), grates (Limited Lifetime Warranty), burner covers (Limited Lifetime Warranty). All warranties are subject to the review and approval of NOVO.

### **GAS APPLIANCES (GRILLS, SIDE/POWER BURNERS)**

- Limited Lifetime Warranty on construction and manufacturer defects
- Limited Lifetime Warranty on stainless steel construction
- Limited Lifetime Warranty on cooking grates, burners, burner covers, valves, stainless steel burner covers and heat zone separators, temperature gauges, & hood springs
- Limited Lifetime Warranty on briquette systems
- 3 Year Warranty on all other parts, components, & electrical, including: LED bulbs, wire harness, & switches; power source wire; transformer; interior halogen light wire & bulb; regulators

### **COLD STORAGE & SINKS**

- Limited Lifetime Warranty on coolers
- 3 Year Warranty on drains & faucets

### **REFRIGERATION (15" & 24" models)**

- 3 Year Warranty on all construction including compressors
- 1 Year Warranty on transformer, LED bulbs, LED harness, power source wire, LED switches, interior halogen light wire/bulbs

### **DRAWERS, DOORS, GRILL LINERS & CARTS**

- Limited Lifetime Warranty on construction, workmanship and materials for all stainless steel parts, including doors, drawers, grill liners, & carts
- 3 Year Warranty on electrical (Warming Drawers)

### **VENT HOODS**

- 5 Year Warranty on all stainless steel construction
- 3 Year Warranty on blowers, LED lighting, wiring harnesses and switches



## CUT-OUT SPECIFICATIONS

		A	B	C	D
<b>BUILT-IN GRILLS</b>	Description	Width	Height	Depth	Countertop Overhang Width
NOVO/HONE42	42" NOVO/HONE Grill	40-3/4"	10-1/4"	21-5/8"	42"
NOVO/HONE36	36" NOVO/HONE Grill	34-3/4"	10-1/4"	21-5/8"	36"
NOVO/HONE30	30" NOVO/HONE Grill	28-3/4"	10-1/4"	21-5/8"	30"
ALTA40	40" ALTA Grill	37-3/4"	8-1/2"	20-3/4"	39-5/8"
ALTA32	32" ALTA Grill	30-5/8"	8-1/2"	20-3/4"	32-1/2"

<b>SIDE BURNERS</b>	Description	Width	Height	Depth	Countertop Overhang Width
NOVOPB	NOVO/HONE Power Burner	21"	10-1/4"	22-3/4"	24"
NOVODBSB	NOVO/HONE Double Side Burner	13-1/4"	10-1/4"	23-1/4"	13-7/8"
ALTAPB	ALTA Power Burner	13-3/4"	8"	19"	15-7/8"
ALTADBSB	ALTA Double Side Burner	10-3/4"	8"	20-3/4"	12-5/8"

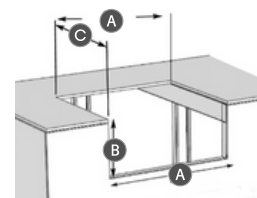
<b>WARMING DRAWER</b>	Description	Width	Height	Depth
NOVO36WD	36" Warming Drawer	34-3/8"	10"	21"

<b>REFRIGERATION</b>	Description	Width	Height	Depth
NOVO24DLXREF	24" Deluxe Refrigerator	25"	34-1/2"	24"
NOVO242DREF	24" 2-Drawer Refrigerator	25"	34-1/2"	24"
NOVO15GLASSREF	15" Glass Door Refrigerator	16-1/8"	34-3/4"	23-3/4"
NOVO15IM	15" Ice Machine	15"	33-1/2"	24"
NOVODBLKEG	24" Double Tap Kegeator	25"	34-1/2"	24"
NOVOSNGKEG	24" Single Tap Kegeator	25"	34-1/2"	24"
NOVO15WINEI	15" Wine Cooler	16-1/8"	34-3/4"	23-3/4"
NOVO24TRIM	24" Refrigerator Trim	25"	34-1/2"	
NOVO15TRIM	15" Refrigerator Trim	16-1/8"	34-3/4"	
NOVOIMTRIM	15" Ice Machine Trim	16-1/8"	33-3/4"	

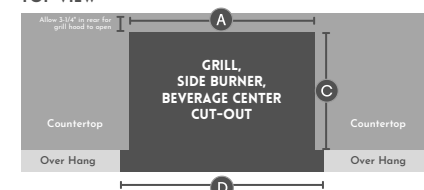
<b>SINK &amp; BAR</b>	Description	Width	Height	Depth	Countertop Overhang Width
NOVO30BEV	30" Beverage Center	28"	10-1/2"	23-1/2"	29-7/8"
NOVO19SINK	19" Undermount Sink	13"	7"	16-1/2"	
NOVO15SINK	15" Drop-In Sink	14-1/4"	14-1/4"	16-1/2"	
NOVO28COOLER	28" Drop-In Cooler	26"	12"	18-3/4"	
NOVO17COOLER	17" Drop-In Cooler	23-1/4"	13"	17-1/4"	

		A	B	C
<b>STORAGE</b>	Description	Width	Height	Depth
NOVO17DBLSD	17" Double Drawer	14-3/8"	19-3/8"	21"
NOVO17TSD	17" Triple Drawer	15"	27-1/4"	21"
NOVO26UD	26" Utensil Drawer	23-1/4"	3-5/8"	21"
NOVO302DADC	30" 2-Drawer/Door Combo	22-3/8"	19-3/4"	21"
NOVO332DADC	33" 2-Drawer/Door Combo	30-1/8"	19-3/4"	21"
NOVO362DADC	36" 2-Drawer/Door Combo	33-1/8"	19-3/4"	21"
NOVO422DADC	42" 2-Drawer/Door Combo	39-3/8"	19-3/4"	21"
NOVO362DSC	36" 2-Drawer/Door Dry Storage Combo	36-1/4"	19-1/4"	21"
NOVO20STD	20" Single Trash Drawer	17-1/2"	24-3/8"	17-1/2"
NOVO20DBLTD	20" Double Trash Drawer	17-1/2"	24-3/8"	27-1/2"
NOVO172DPTHC	17" 2-Drawer/Paper Towel Holder	15"	17-1/4"	21"
NOVO18SVAD	18" Single Vertical Access Door	14-1/8"	19-3/4"	
NOVO20SVAD	20" Single Vertical Access Door	17-1/4"	24-3/4"	
NOVO27SHAD	27" Single Horizontal Access Door	24-1/4"	17-3/4"	
NOVO30DBLAD	30" Double Access Doors	27-1/4"	19-3/4"	
NOVO33DBLAD	33" Double Access Doors	30-1/8"	19-3/4"	
NOVO36DBLAD	36" Double Access Doors	33-1/4"	19-3/4"	
NOVO42DBLAD	42" Double Access Doors	39-1/4"	19-3/4"	

<b>INSULATING LINERS</b>	Description	Width	Height	Depth
NOVO42IL	NOVO/HONE 42" Grill Liner	43"	11-1/2"	24-1/2"
NOVO36IL	NOVO/HONE 36" Grill Liner	37"	11-1/2"	24-1/2"
NOVO30IL	NOVO/HONE 30" Grill Liner	31"	11-1/2"	24-1/2"
ALTA40IL	ALTA 40" Grill Liner	40-3/8"	9-3/4"	22"
ALTA32IL	ALTA 32" Grill Liner	33"	9-3/4"	22"
NOVOPBIL	NOVO/HONE Power Burner Liner	24-3/8"	11-3/8"	24-3/8"
NOVODBSBIL	NOVO/HONE Side Burner Liner	15-5/8"	11-1/2"	24-1/4"
ALTAPBIL	ALTA Power Burner Liner	16-1/4"	9-5/8"	20-3/8"
ALTADBSBIL	ALTA Side Burner Liner	13-1/4"	9-5/8"	22"



TOP VIEW



D = Notch out width of countertop overhang should be cut back to the cabinet base to allow appliance to sit flush with base.

**NOVO**

THE NEW AMERICAN BACKYARD

[www.novogrills.com](http://www.novogrills.com)

